

The
402

ARTS COLLECTIVE

LESSON STUDIO





A
COMPREHENSIVE PLAN

for

Talent Discovery



HOW IT WORKS:

1. *Choose your art form*
2. *Choose your Artist Instructor*
3. *Choose Location*

ENROLL ONLINE!



RENEWING

A young boy with dark hair, wearing a blue t-shirt with a graphic that says "CATS NAW", is smiling and playing a cello. He is looking towards the right. In the foreground, a person's hand is visible, palm up, as if gesturing or conducting. The background is slightly blurred, showing what appears to be a stage or rehearsal space with some equipment.

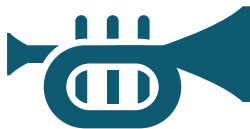
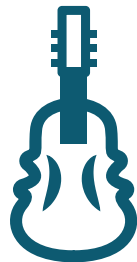
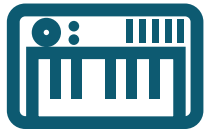
LOCAL ARTS EDUCATION

IN OMAHA, NEBRASKA

1

CHOOSE YOUR ART FORM

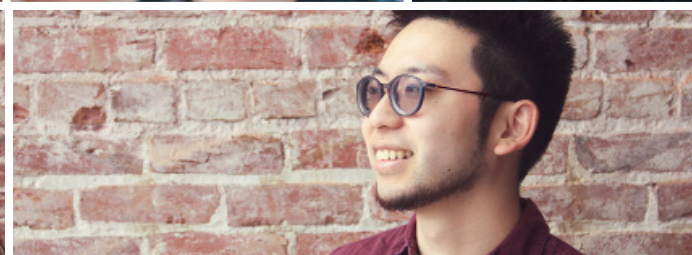
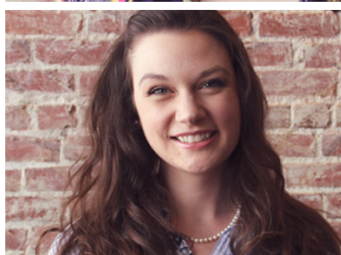
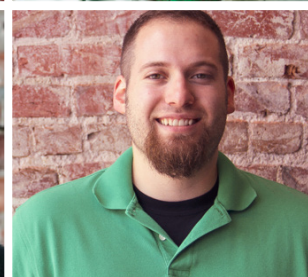
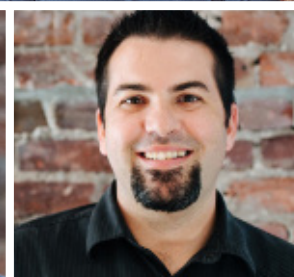
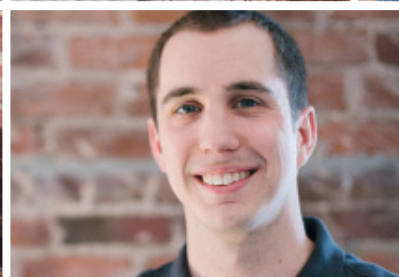
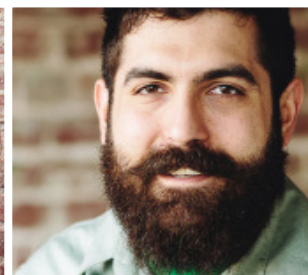
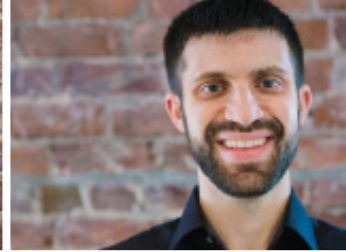




2.

CHOOSE YOUR INSTRUCTOR





3

CHOOSE LOCATION



A light gray map of Omaha, Nebraska, serves as the background. It shows major roads including Interstate 680, Interstate 75, and Interstate 29. The Missouri River is visible at the top. Two studio locations are highlighted with black callout boxes. The first box, for West Omaha Studio, is positioned over the area near Florence and Missouri streets. The second box, for Benson Studio, is positioned over the area near Benson and Council Bluffs streets. A blue airplane icon is also visible on the map near the Benson Studio location.

WEST OMAHA STUDIO



*2544 North 156th Cir
Omaha, NE
68132*



*6051 Maple Street
Omaha, NE
68104*



WWW

www.402artscollective.org



info@402artscollective.org



402.913.1939

